

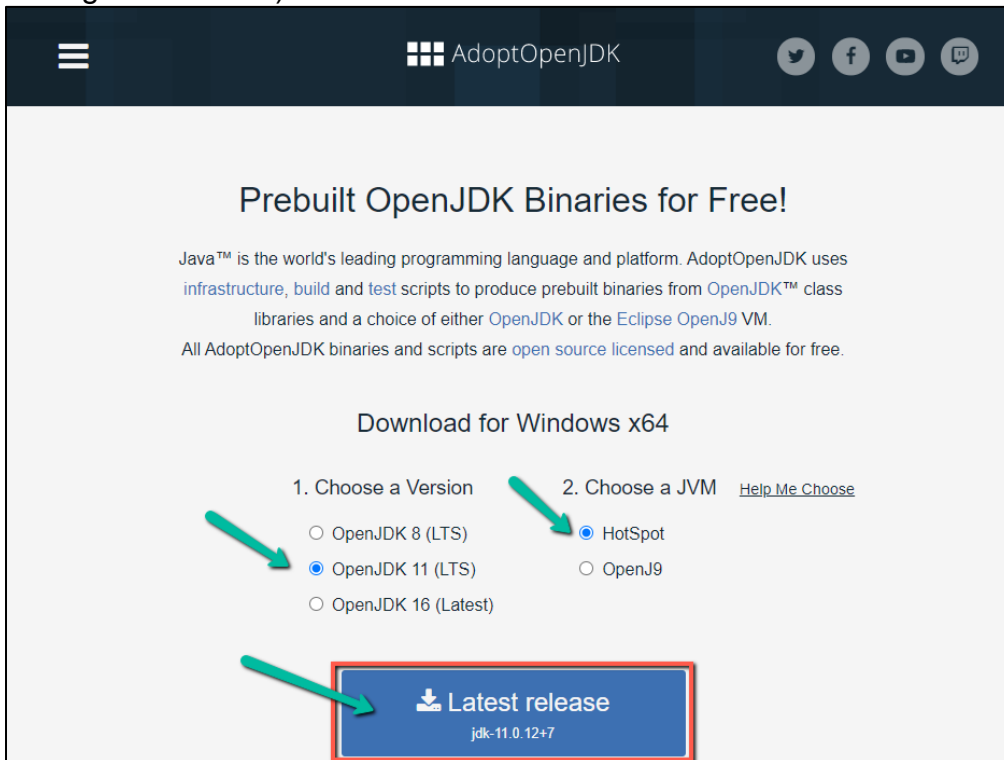
# Getting and Installing Java and Eclipse – our Integrated Development Environment (IDE)

## An Alternative Method to Installing Java and Eclipse

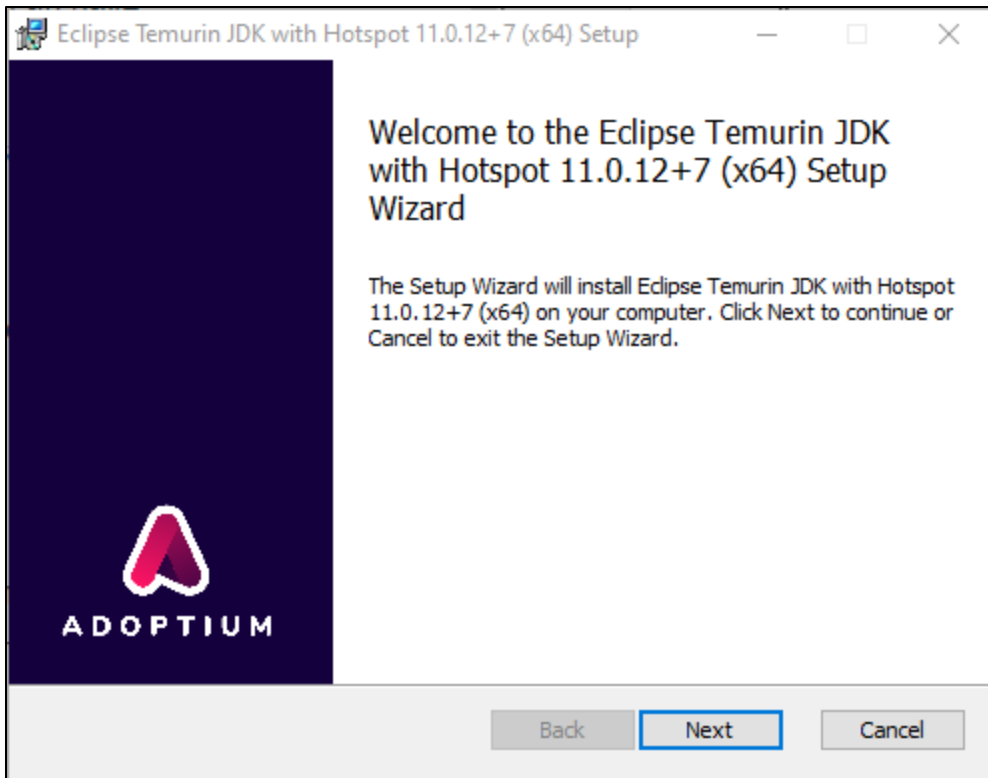
We expect everyone to use the **Eclipse** development environment and **Java version 11** or *lower*. You may download and install each of them from the sites below:

(Note, for a smoother experience Java must be installed before you install Eclipse.)

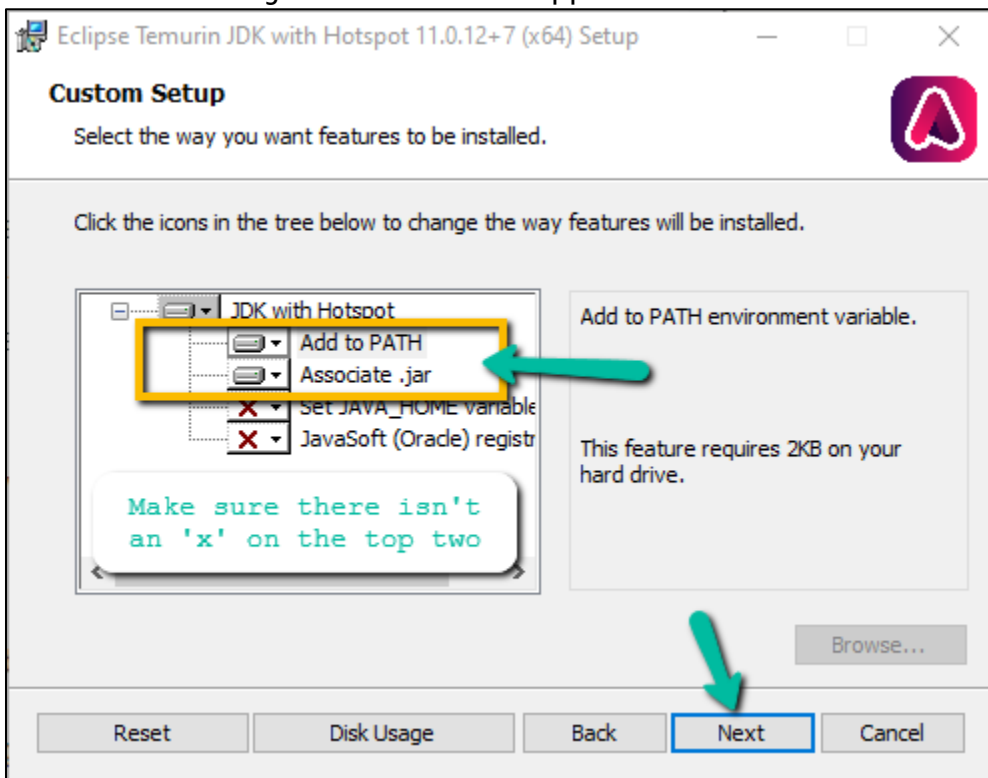
1. **Java:** Go to Adopt OpenJDK <https://adoptopenjdk.net>
  - a. Choose **OpenJDK 11 (LTS)** and the **HotSpot** JVM options before downloading (click the big blue button.)



- b. **Save** the file in a location you can find again (e.g. your Desktop or your Downloads folder) The file should be named something like *this (maybe not exactly)*: OpenJDK11U-jdk\_x64\_windows\_hotspot\_11.0.12\_7.msi
  - c. Once it has downloaded, navigate to its location in your filesystem and **click** on it to launch the installation program. Read and accept the license if you are happy with the terms.

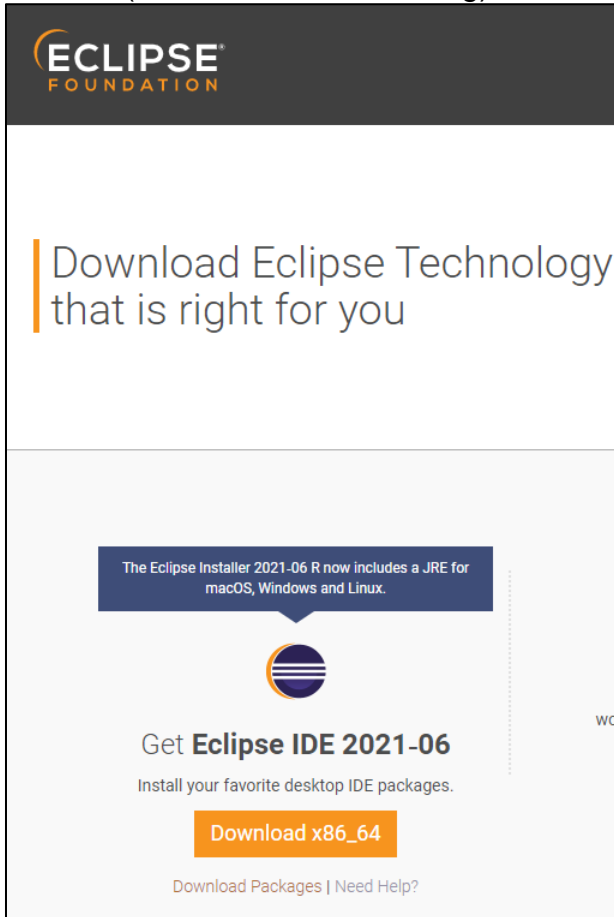


- d. On the *Custom Setup* screen, you can choose the features that you want to install and optionally change the default installation directory. The default location AdpotOpenbJDK installs to is: C:\Program Files\AdoptJDK\recommend keeping).
  - i. Add the installation to the PATH environment variable
  - ii. Associate .jar files with Java applications

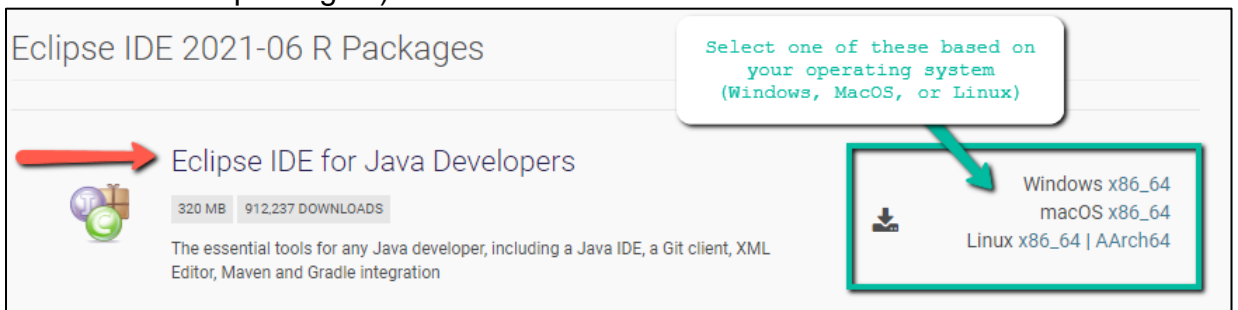


- e. When you have done that, click **Next**.
- f. Click **Install** to begin the installation.
- g. When the installation is finished, click **Finish** to close the program.

2. **Eclipse:** Go to the Eclipse main page <http://www.eclipse.org/downloads/>
- a. Once you are on the website, a suggestion for what you should download will be made available for you based on your operating system. The writer of this guide is using a Windows 10 operating system, and so **Eclipse IDE 2021-06** is the suggested Eclipse Installer (at the time of this writing). **Click** on the orange **Download** button.



- i. Alternatively, you can navigate to the **download packages** section of the website (<https://www.eclipse.org/downloads/packages/>) choosing an appropriate installer under **Eclipse IDE for Java Developers** (do not use any of the other packages!)

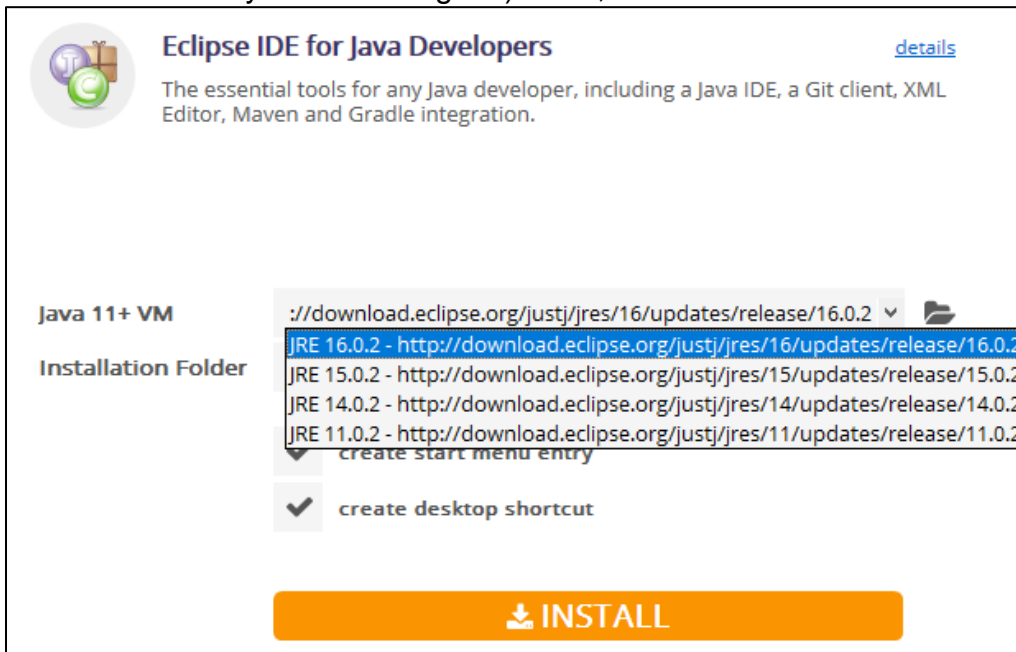


- b. **Save** the file in a location you can find again (e.g. your Desktop or your Downloads folder) The file should be named something like this (it may be different depending on your operating system): `eclipse-inst-jre-win64.exe`
- c. Once it has downloaded, navigate to its location in your filesystem and **click** on it to launch the installation program.

d. Select Eclipse IDE for Java Developers

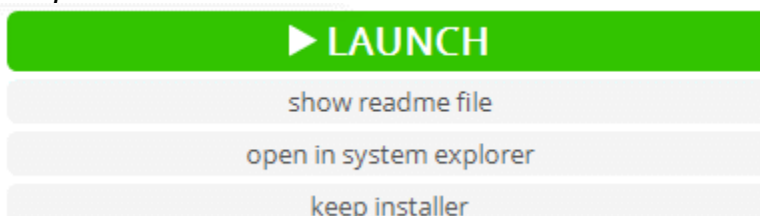


e. Select the latest version (JRE 16 at the time of this writing). It is a good idea to keep the Installation Folder the same as the suggested path (unless you really want it somewhere else you can change it.) Then, click **Install**.

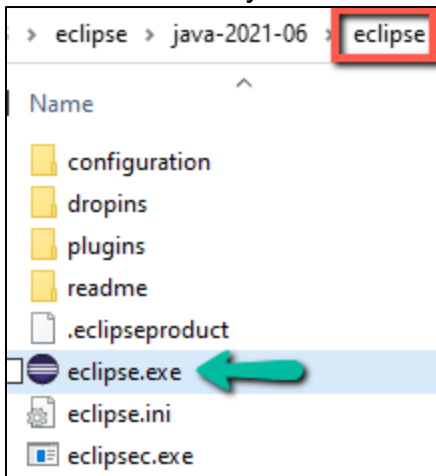


f. Read and accept the license if you are happy with the terms. If you do, click **Accept Now**.

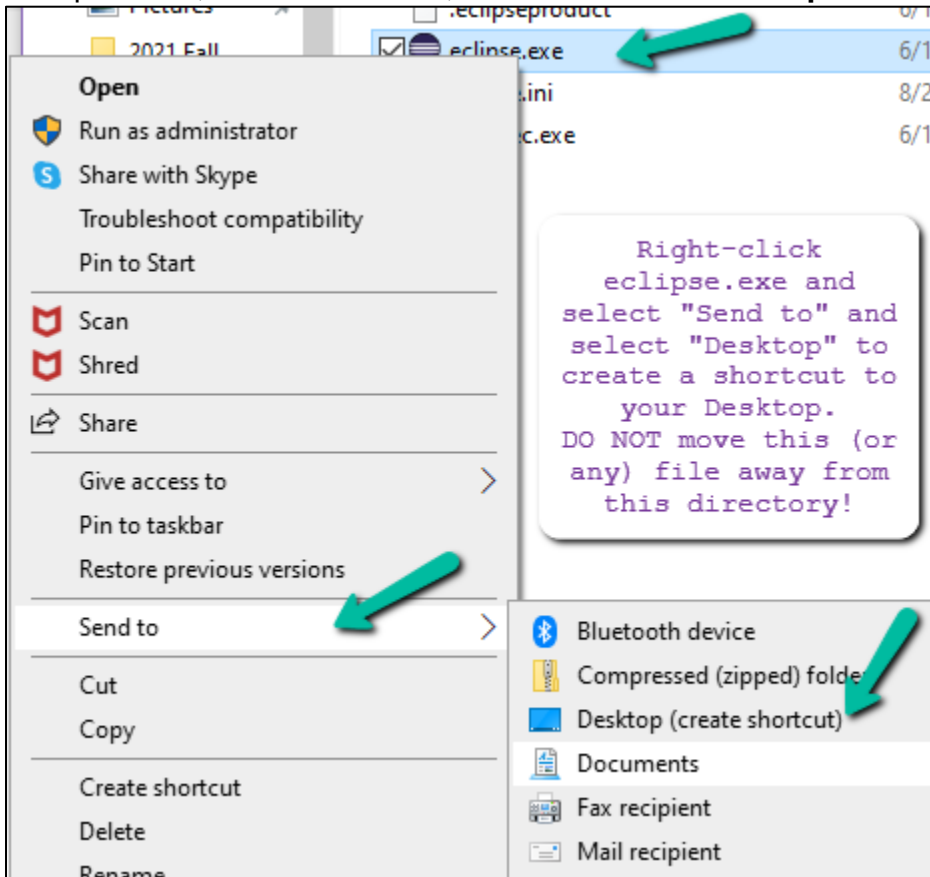
g. Once installation is complete, as tempting as it is to click on Launch, hold off for a moment! Instead, click on “**open in system explorer**.” This will open a folder called “*eclipse*”.



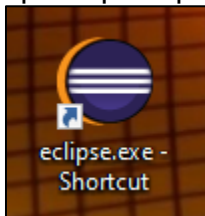
h. Inside this folder you'll find the Eclipse executable file: eclipse.exe



i. Let's create a shortcut to the desktop so it is easier to launch Eclipse without having to navigate to this location in your computer every time. To do this, right-click on eclipse.exe, select "Send to", and then select "Desktop."



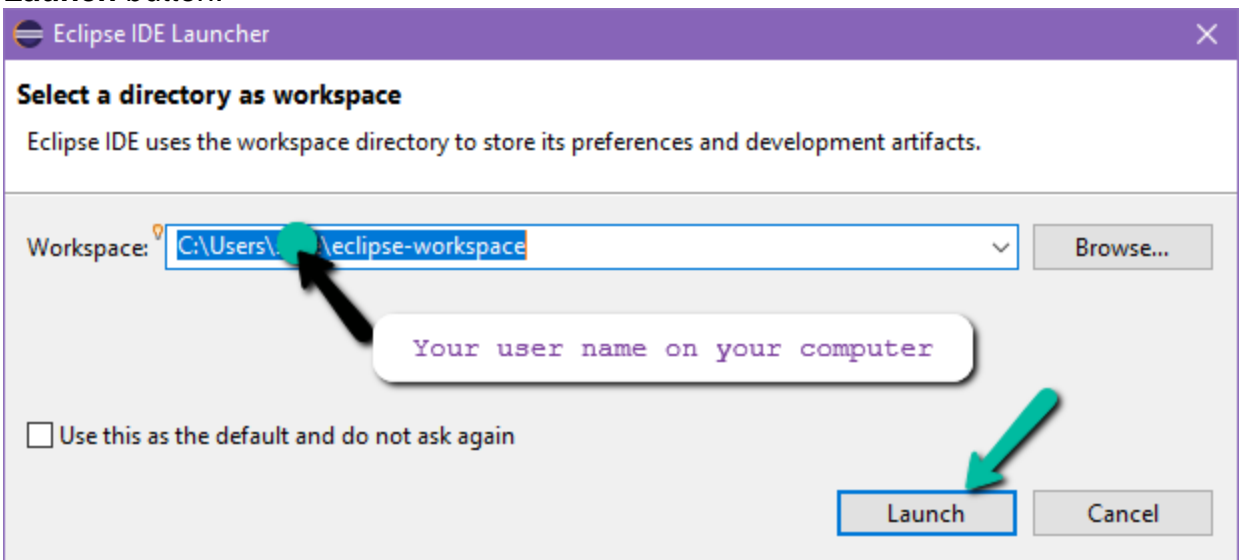
j. Go to your desktop and you'll find the Eclipse icon here. Now, any time you wish to open up eclipse, click on this shortcut and the application will open!



- k. Launch Eclipse either by clicking on the Launch button or by clicking on the newly created icon on your desktop (the splash screen may look a bit different).



- l. The first time you open Eclipse, you will be asked to select a directory location for your Eclipse workspace. This is where all of your Java projects and files will be stored. It is very important you remember and know where these files are being saved! The usual location for this is: `C:\Users\\eclipse-workspace`  
**It is recommended you keep this default location**; however, you are welcome to change it as long as you remember what you changed it to! If you wish, you can click on the check-box next to “Use this as the default and do not ask again”, otherwise you can leave it unchecked. When you have made note of the workspace directory, **click the Launch** button.



- m. **Congratulations! You have successfully launched Eclipse IDE!** You are ready to begin. 😊
- i. For the first time you log in, you may x-out (close) of the *Welcome* tab and the *Donate* tab.

**Pro Tip:** Create a **shortcut** to your **Eclipse Workspace directory** and place it on your desktop for easy access. When submitting .java files for assignments you will find your files in this location.